

DAILY SCOPE WAVE

23 September 2024

MNC Bank Tower Lt. 16

Jl. Kebon Sirih No. 21 - 27, Jakarta 10340, Indonesia
www.mncsekuritas.id
a member of MNC Group

MNCS Research Division

T Herditya Wicaksana, CEWA-M
herditya.wicaksana@mncgroup.com
+6221 29080 3111 Ext.52150

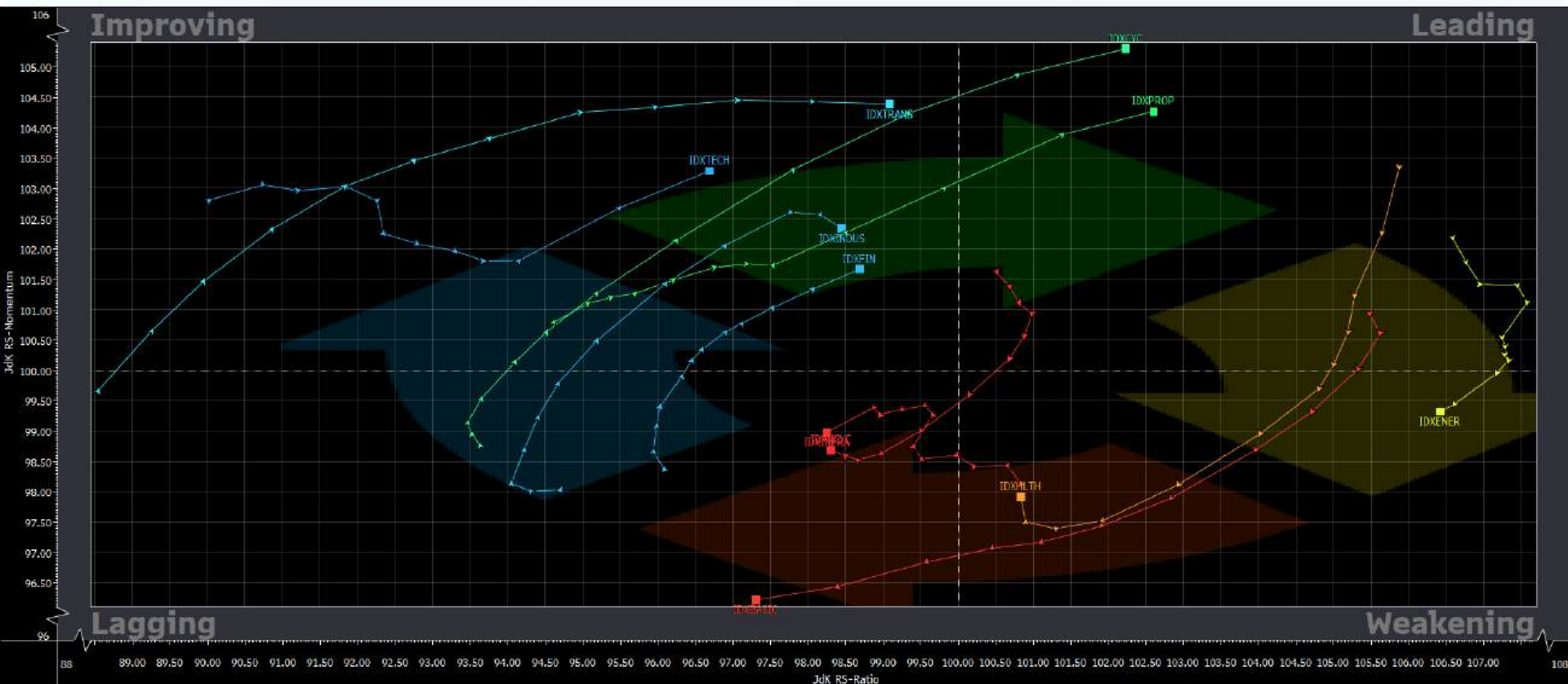
Jakarta Composite Index (JCI) *short term (1-2 days) bearish*

Apabila IHSG belum mampu break dari 7,910-7,923 sebagai resistance terdekatnya, maka posisi IHSG sudah mengakhiri wave [i] dari wave 3 atau wave 3 dari wave (3) pada label merah.

Top picks of the Day:

Stock	Close Price	Recommendation	Tactical Moves
AKRA	1,495	Buy on Weakness	AKRA sedang berada di awal wave iii dari wave (i) dari wave [iii].
BSDE	1,225	Buy on Weakness	BSDE sedang berada di awal wave [v] dari wave 1.
MAPI	1,850	Buy on Weakness	MAPI sedang berada pada bagian dari wave (iv) dari wave [iii].
MBMA	540	Spec Buy	MBMA sedang berada di awal wave (iii) dari wave [i].

Relative Rotation Graph



Primbon Index 2024

Tahun Jawa 1957

Tahun Jawa 1958



Tahun Masehi 2024

AKRA - Buy on Weakness

AKRA menguat 1,70% ke 1,495 disertai dengan peningkatan volume pembelian, namun penguatan AKRA masih tertahan oleh MA60. Kami perkirakan, posisi AKRA saat ini sedang berada di awal wave iii dari wave (i) dari wave [iii].

Buy on Weakness: 1,470-1,485

Target Price: 1,525, 1,580

Stoploss: below 1,455



BSDE – *Buy on Weakness*

BSDE terkoreksi 2,78% ke 1,225 disertai dengan munculnya volume penjualan. Saat ini, posisi BSDE diperkirakan sedang berada di awal wave [v] dari wave 1, sehingga koreksi BSDE akan cenderung terbatas dan berpeluang menguat kembali.

Buy on Weakness: 1,180-1,215

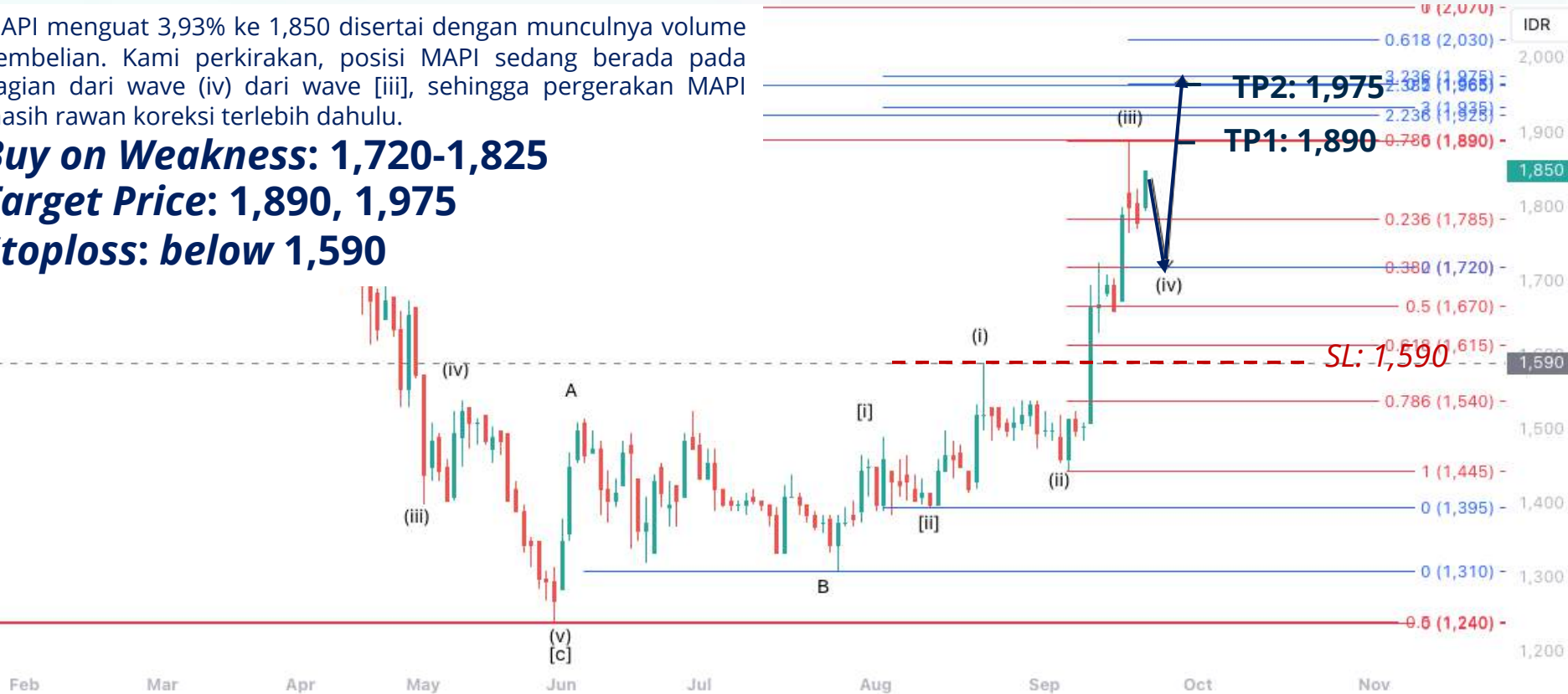
Target Price: 1,305, 1,415

Stoploss: below 1,125



MAPI menguat 3,93% ke 1,850 disertai dengan munculnya volume pembelian. Kami perkirakan, posisi MAPI sedang berada pada bagian dari wave (iv) dari wave [iii], sehingga pergerakan MAPI masih rawan koreksi terlebih dahulu.

Buy on Weakness: 1,720-1,825
Target Price: 1,890, 1,975
Stoploss: below 1,590



MBMA - Spec Buy

MBMA menguat 1,89% ke 540 disertai dengan adanya peningkatan volume pembelian, namun penguatannya tertahan oleh MA20. Selama masih mampu berada di atas 520 sebagai stoplossnya, maka posisi MBMA saat ini diperkirakan sedang berada di awal wave (iii) dari wave [i].

Spec Buy: 525-540
Target Price: 570, 590
Stoploss: below 520



PT MNC SEKURITAS


MNC Bank Tower Lt. 15 – 16


Jl. Kebon Sirih No. 21 - 27, Jakarta Pusat 10340

Telp : (021) 2980 3111

Fax : (021) 3983 6899

Disclaimer : MNCS Daily Scope Wave has been issued by PT MNC Sekuritas, It may not be reproduced or further distributed or published, in whole or in part, for any purpose. PT MNC Sekuritas has based this document on information obtained from sources it believes to be reliable but which it has not independently verified; PT MNC Sekuritas makes no guarantee, representation or warranty and accepts no responsibility to liability as to its accuracy or completeness. Expression of opinion herein are those of the research department only and are subject to change without notice. This document is not and should not be construed as an offer or the solicitation of an offer to purchase or subscribe or sell any investment. PT MNC Sekuritas and its affiliates and/or their offices, directors and employees may own or have positions in any investment mentioned herein or any investment related thereto and may from time to time add to or dispose of any such investment. PT MNC Sekuritas and its affiliates may act as market maker or have assumed an underwriting position in the securities of companies discusses herein (or investment related thereto) and may sell them to or buy them from customers on a principal basis and may also perform or seek to perform investment banking or underwriting services for or relating to those companies.

 www.mncsekuritas.id  @mncsekuritas

 1-500-899  MNC Sekuritas

 research@mncsekuritas.id  MNC Sekuritas