



Daily SCOPE Wave

MNC Financial Center Lt. 16

Jl. Kebon Sirih No. 21 – 27, Jakarta 10340, Indonesia

www.mncsekuritas.id

a member of MNC Group

MNCS Research Team | herditya.wicaksana@mncgroup.com | +6221 29080 3111 Ext.52150

28 Oktober 2021

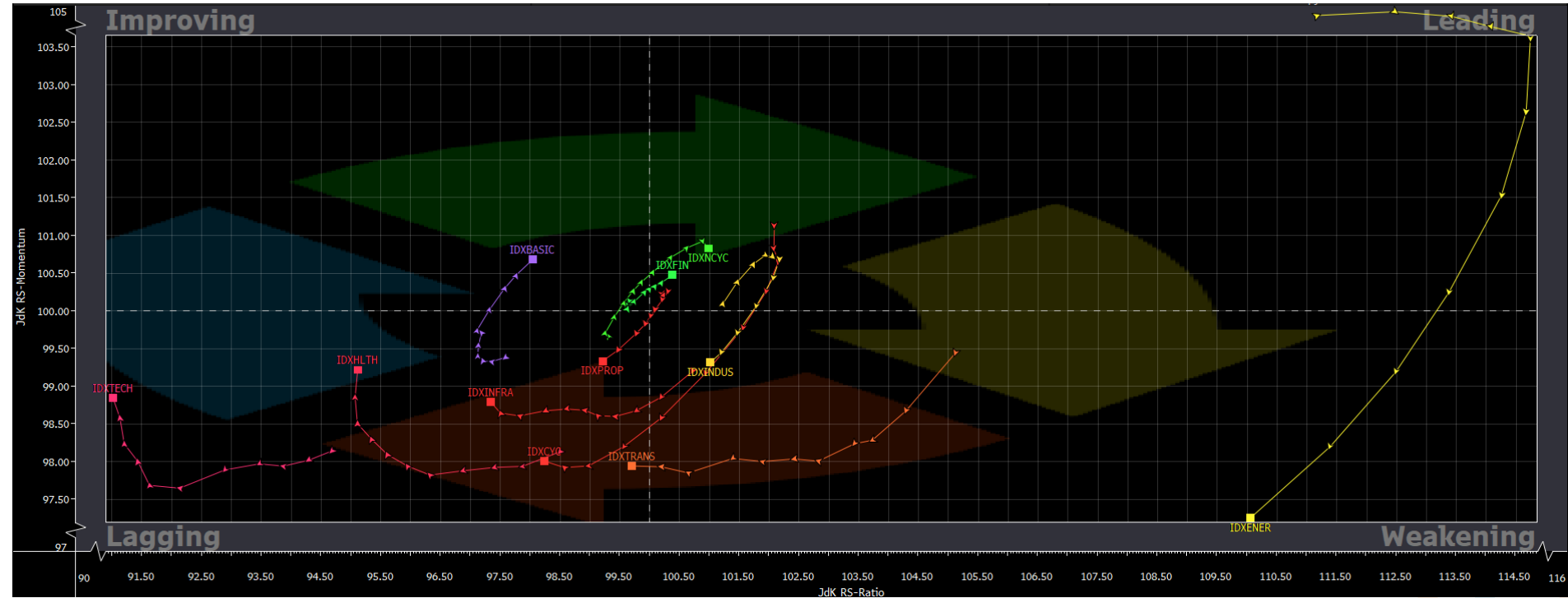
Jakarta Composite Index (JCI) short term (1-2 days) bullish

saat ini posisi IHSG sedang berada di awal wave [iv] terlebih apabila IHSG belum mampu break resistance di 6,687.

Top picks of the Day:

Stock	Close Price	Recommendation	Tactical Moves
ANTM	2,350	Buy on Weakness	ANTM sedang berada di akhir wave [ii] dari wave C.
AUTO	1,130	Buy on Weakness	AUTO berada di akhir wave (iv) dari wave [c] dari wave B.
ELSA	312	Spec Buy	ELSA saat ini sedang berada di awal wave [v] dari wave 1.
CTRA	1,075	Sell on Strength	CTRA sedang berada di awal wave 2 dari wave (3).

RRG – Relative Rotation Graph



MNCS Primbon Index

Primbon Index 2021

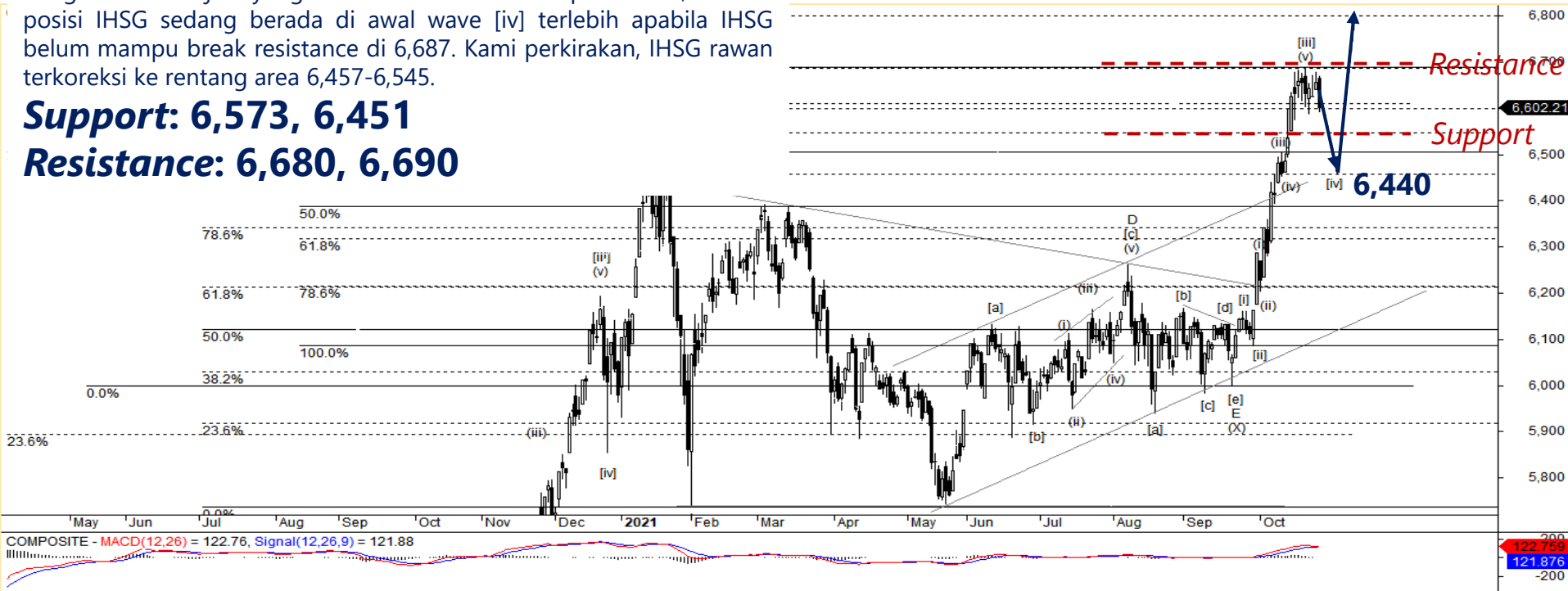


JCI – Correction

Kemarin (27/10), IHSG ditutup terkoreksi 0,8% ke leve 6,602 disertai dengan tekanan jual yang relatif besar. Kami memperkirakan, saat ini posisi IHSG sedang berada di awal wave [iv] terlebih apabila IHSG belum mampu break resistance di 6,687. Kami perkirakan, IHSG rawan terkoreksi ke rentang area 6,457-6,545.

Support: 6,573, 6,451

Resistance: 6,680, 6,690



ANTM – Buy on Weakness

ANTM ditutup terkoreksi cukup agresif sebesar 2,1% ke level 2,350 pada perdagangan kemarin (27/10), pergerakan ANTM pun menembus MA20 dan MA60-nya. Saat ini, posisi ANTM sedang berada di akhir wave [ii] dari wave C, sehingga koreksi ANTM pun akan cenderung terbatas dan berpeluang menguat kembali. Hal ini akan berlaku apabila ANTM tidak terkoreksi ke bawah 2,220.

Buy on Weakness: 2,280-2,340

Target Price: 2,440, 2,630

Stoploss: below 2,220



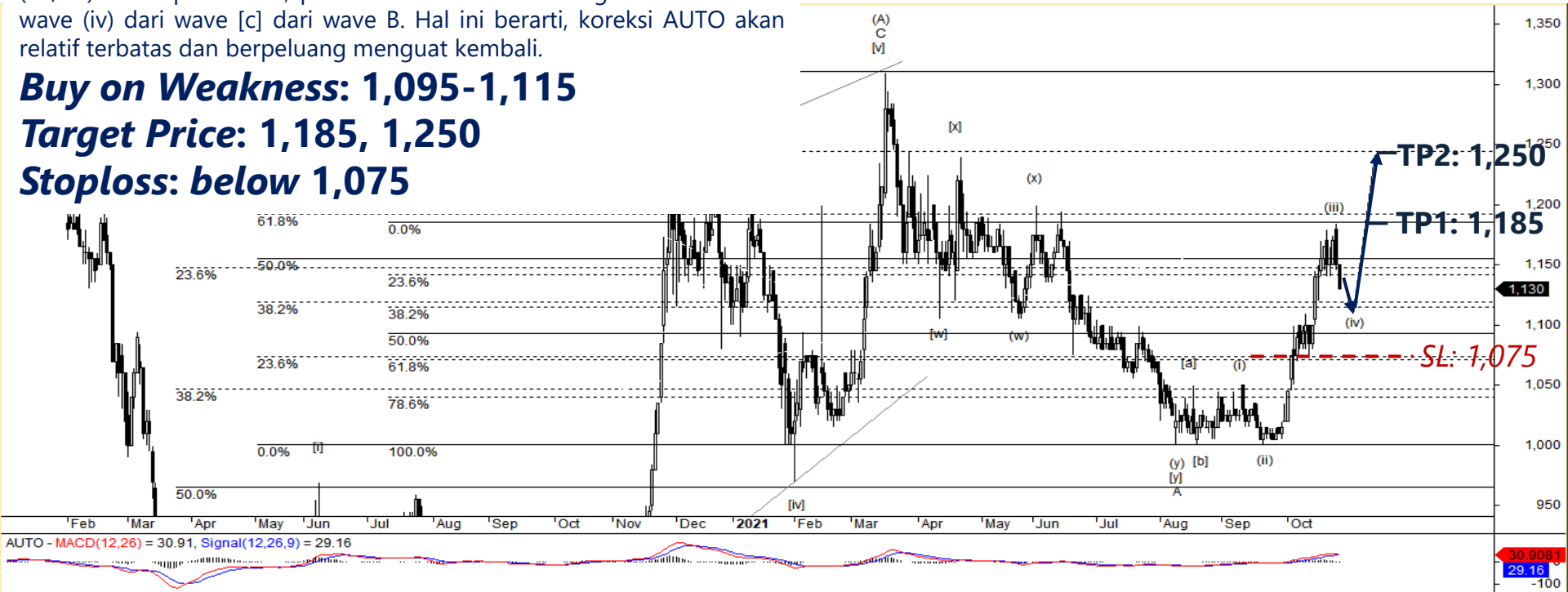
AUTO – Buy on Weakness

AUTO ditutup terkoreksi 1,7% ke level 1,130 pada perdagangan kemarin (27/10). Kami perkirakan, posisi AUTO saat ini sedang berada di akhir wave (iv) dari wave [c] dari wave B. Hal ini berarti, koreksi AUTO akan relatif terbatas dan berpotensi menguat kembali.

Buy on Weakness: 1,095-1,115

Target Price: 1,185, 1,250

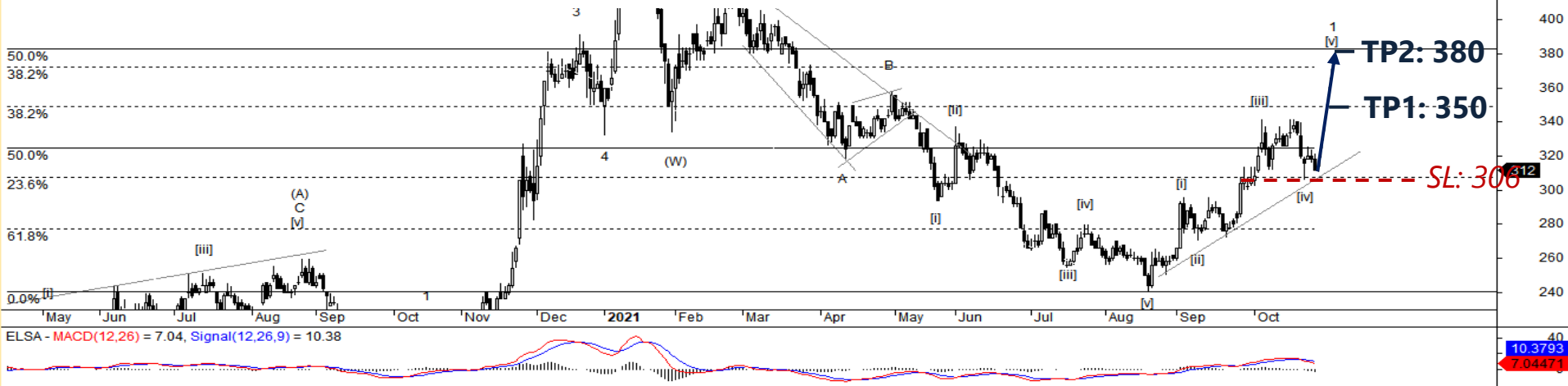
Stoploss: below 1,075



ELSA – Spec Buy

Pada perdagangan kemarin (27/10), ELSA ditutup terkoreksi 1,9% ke level 312. Selama ELSA tidak terkoreksi ke bawah 306 sebagai supportnya, maka posisi ELSA saat ini sedang berada di awal wave [v] dari wave 1.

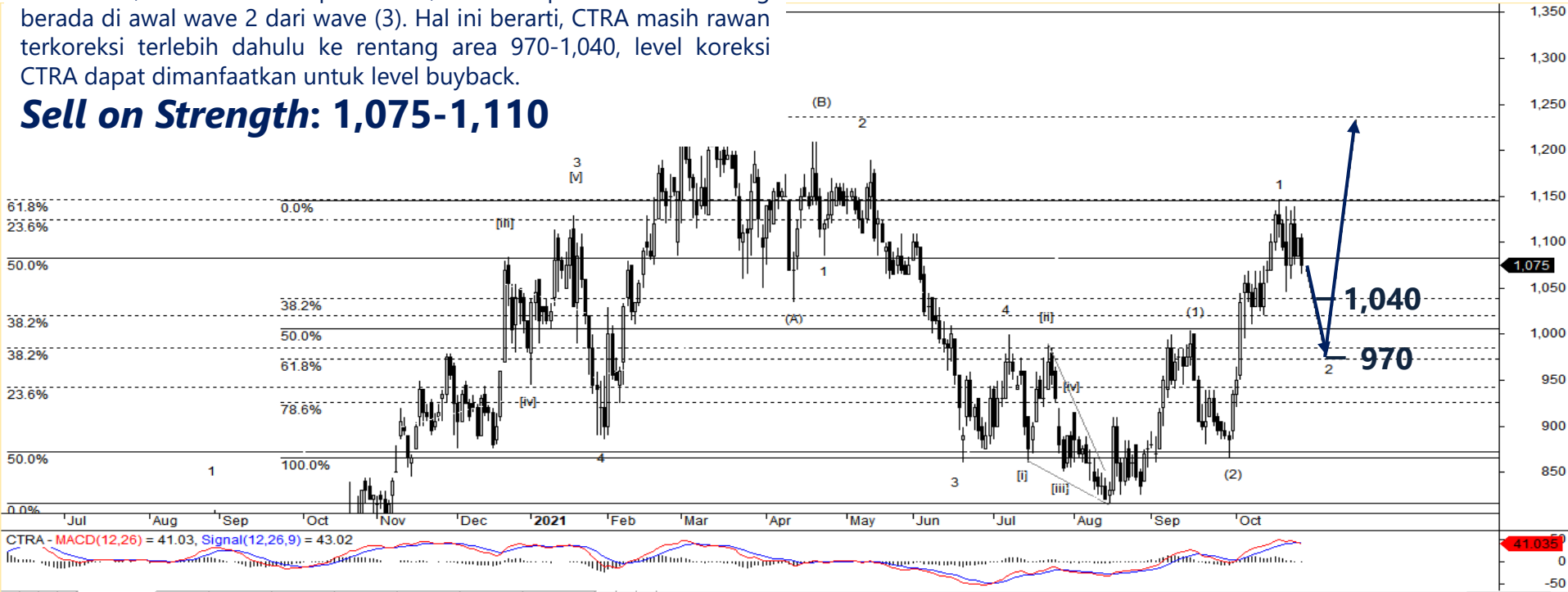
Spec Buy: 308-312
Target Price: 350, 380
Stoploss: below 306



CTRA – Sell on Strength

Kemarin (27/10), CTRA ditutup terkoreksi cukup agresif sebesar 2,7% ke level 1,075. Kami memperkirakan, saat ini posisi CTRA sedang berada di awal wave 2 dari wave (3). Hal ini berarti, CTRA masih rawan terkoreksi terlebih dahulu ke rentang area 970-1,040, level koreksi CTRA dapat dimanfaatkan untuk level buyback.


Sell on Strength: 1,075-1,110





PT MNC SEKURITAS

MNC Financial Center Lt. 14 – 16
Jl. Kebon Sirih No. 21 - 27, Jakarta Pusat 10340
Telp : (021) 2980 3111
Fax : (021) 3983 6899

Disclaimer : MNCS Daily Scope Wave has been issued by PT MNC Sekuritas, It may not be reproduced or further distributed or published, in whole or in part, for any purpose. PT MNC Sekuritas has based this document on information obtained from sources it believes to be reliable but which it has not independently verified; PT MNC Sekuritas makes no guarantee, representation or warranty and accepts no responsibility to liability as to its accuracy or completeness. Expression of opinion herein are those of the research department only and are subject to change without notice. This document is not and should not be construed as an offer or the solicitation of an offer to purchase or subscribe or sell any investment. PT MNC Sekuritas and its affiliates and/or their offices, directors and employees may own or have positions in any investment mentioned herein or any investment related thereto and may from time to time add to or dispose of any such investment. PT MNC Sekuritas and its affiliates may act as market maker or have assumed an underwriting position in the securities of companies discusses herein (or investment related thereto) and may sell them to or buy them from customers on a principal basis and may also perform or seek to perform investment banking or underwriting services for or relating to those companies.

 www.mncsekuritas.id

 @mncsekuritas

 1-500-899

 MNC Sekuritas

 research@mncsekuritas.id

 MNC Sekuritas