



# Daily SCOPE Wave

**MNC Financial Center Lt. 16**

Jl. Kebon Sirih No. 21 – 27, Jakarta 10340, Indonesia

[www.mncsekuritas.id](http://www.mncsekuritas.id)

a member of MNC Group

MNCS Research Team | [herditya.wicaksana@mncgroup.com](mailto:herditya.wicaksana@mncgroup.com) | +6221 29080 3111 Ext.52150

**14 Desember 2021**

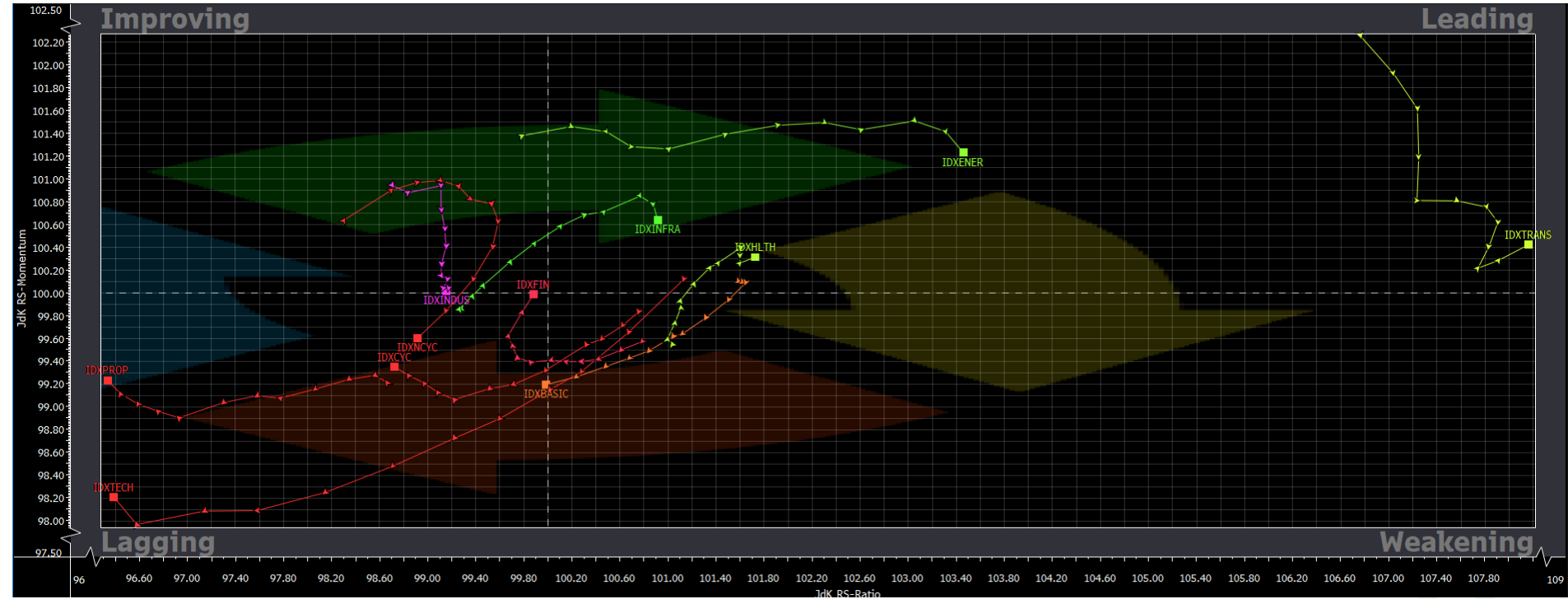
## Jakarta Composite Index (JCI) *short term (1-2 days) bearish*

*Posisi IHSG saat ini sudah berada di akhir wave c dari wave (b) dari wave [a].*

### Top picks of the Day:

Stock	Close Price	Recommendation	Tactical Moves
ISSP	434	Buy on Weakness	ISSP sedang berada di awal wave [v] dari wave C.
BRPT	885	Spec Buy	BRPT saat ini sedang berada di awal wave C.
BSDE	1,040	Buy on Weakness	BSDE sedang berada di awal wave [b] dari wave B.
AGRO	2,080	Buy on Weakness	AGRO sedang berada di awal wave 3 (label hitam).

# RRG – Relative Rotation Graph



# MNCS Primbon Index

## Primbon Index 2021

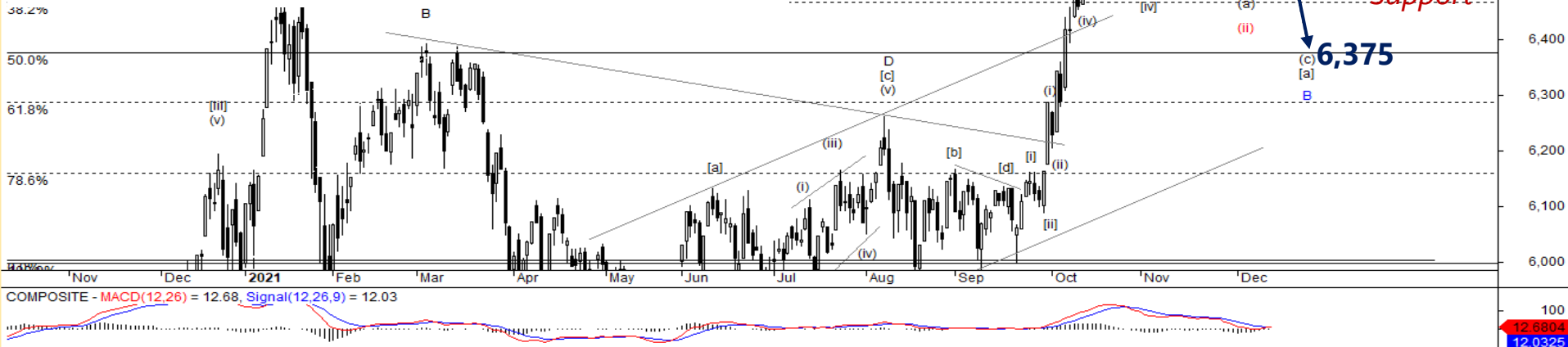


# JCI – Correction?

IHSG ditutup menguat 0,2% ke level 6,662 pada perdagangan kemarin (13/12). Kami perkirakan posisi IHSG saat ini sudah berada di akhir wave c dari wave (b) dari wave [a], sehingga IHSG rawan terkoreksi untuk membentuk awal dari wave (c) dari wave [a] terlebih dahulu ke area 6,610-6,640. Namun demikian, pada skenario alternatif berwarna merah, koreksi IHSG akan terbatas dan akan menguat kembali untuk membentuk bagian dari wave (iii).

**Support: 6,525, 6,480**

**Resistance: 6,640, 6,750**





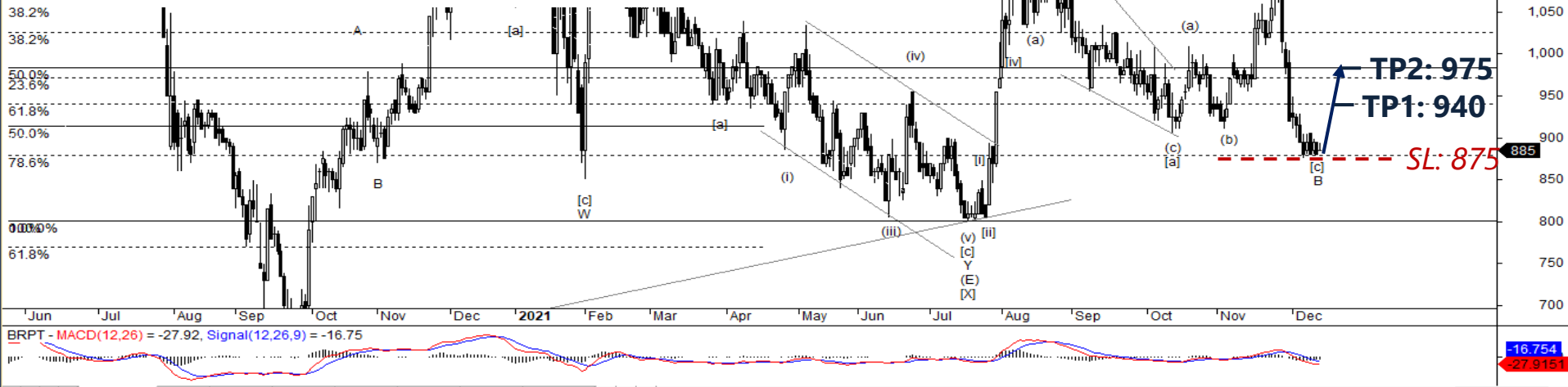
# BRPT – Spec Buy

Pada perdagangan kemarin (13/12), BRPT ditutup menguat 0,6% ke level 885. Selama tidak terkoreksi ke bawah 875 sebagai supportnya, maka BRPT saat ini sedang berada di awal wave C, sehingga pergerakan BRPT akan berpeluang melanjutkan penguatannya.

**Spec Buy: 875-885**

**Target Price: 940, 975**

**Stoploss: below 875**



# BSDE – Buy on Weakness

Kemarin (13/12), BSDE ditutup terkoreksi 0,5% di level 1,040. Selama BSDE tidak terkoreksi ke bawah 1,015 sebagai supportnya, maka BSDE saat ini sedang berada di awal wave [b] dari wave B. Hal ini berarti, BSDE berpotensi berbalik menguat.

**Buy on Weakness: 1,020-1,040**

**Target Price: 1,100, 1,150**

**Stoploss: below 1,015**





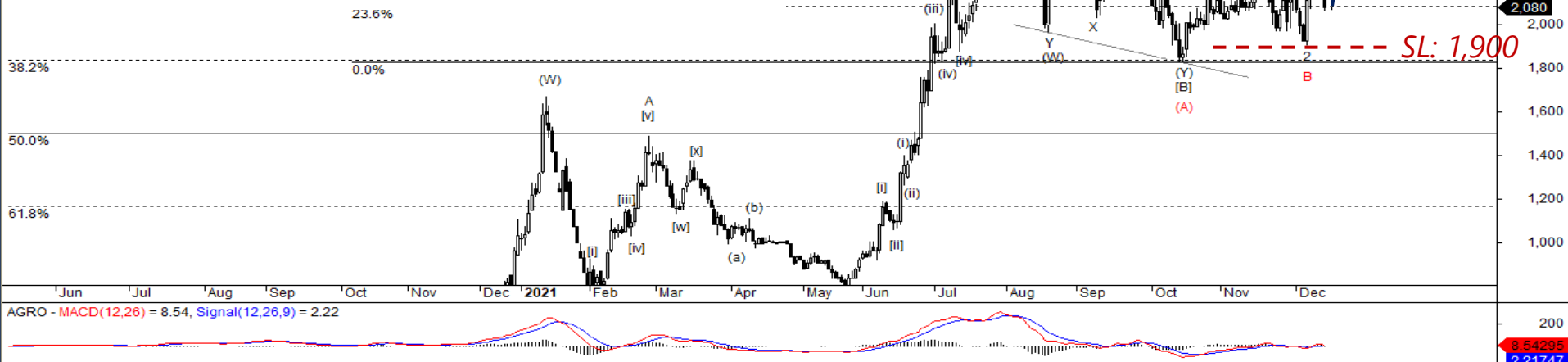
# AGRO – Buy on Weakness

AGRO ditutup terkoreksi 1,9% ke level 2,080 pada perdagangan kemarin (13/12), koreksi AGRO pun menembus cluster MA20 dan MA60-nya. Kami perkirakan, posisi AGRO saat ini sedang berada di awal wave 3 (label hitam) atau wave C (label merah). Hal ini berarti, koreksi AGRO akan relatif terbatas dan berpotensi menguat kembali.

**Buy on Weakness: 1,980-2,080**

**Target Price: 2,320, 2,630**


**Stoploss: below 1,900**




## PT MNC SEKURITAS

MNC Financial Center Lt. 14 – 16  
Jl. Kebon Sirih No. 21 - 27, Jakarta Pusat 10340  
Telp : (021) 2980 3111  
Fax : (021) 3983 6899

**Disclaimer :** MNCS Daily Scope Wave has been issued by PT MNC Sekuritas, It may not be reproduced or further distributed or published, in whole or in part, for any purpose. PT MNC Sekuritas has based this document on information obtained from sources it believes to be reliable but which it has not independently verified; PT MNC Sekuritas makes no guarantee, representation or warranty and accepts no responsibility to liability as to its accuracy or completeness. Expression of opinion herein are those of the research department only and are subject to change without notice. This document is not and should not be construed as an offer or the solicitation of an offer to purchase or subscribe or sell any investment. PT MNC Sekuritas and its affiliates and/or their offices, directors and employees may own or have positions in any investment mentioned herein or any investment related thereto and may from time to time add to or dispose of any such investment. PT MNC Sekuritas and its affiliates may act as market maker or have assumed an underwriting position in the securities of companies discusses herein (or investment related thereto) and may sell them to or buy them from customers on a principal basis and may also perform or seek to perform investment banking or underwriting services for or relating to those companies.

 [www.mncsekuritas.id](http://www.mncsekuritas.id)

 @mncsekuritas

 1-500-899

 MNC Sekuritas

 [research@mncsekuritas.id](mailto:research@mncsekuritas.id)

 MNC Sekuritas