



Daily SCOPE Wave

MNC Financial Center Lt. 16

Jl. Kebon Sirih No. 21 – 27, Jakarta 10340, Indonesia

www.mncsekuritas.id

a member of MNC Group

Institution Research Team | herditya.wicaksana@mncgroup.com | +6221 29080 3111 Ext.52150

7 Desember 2020

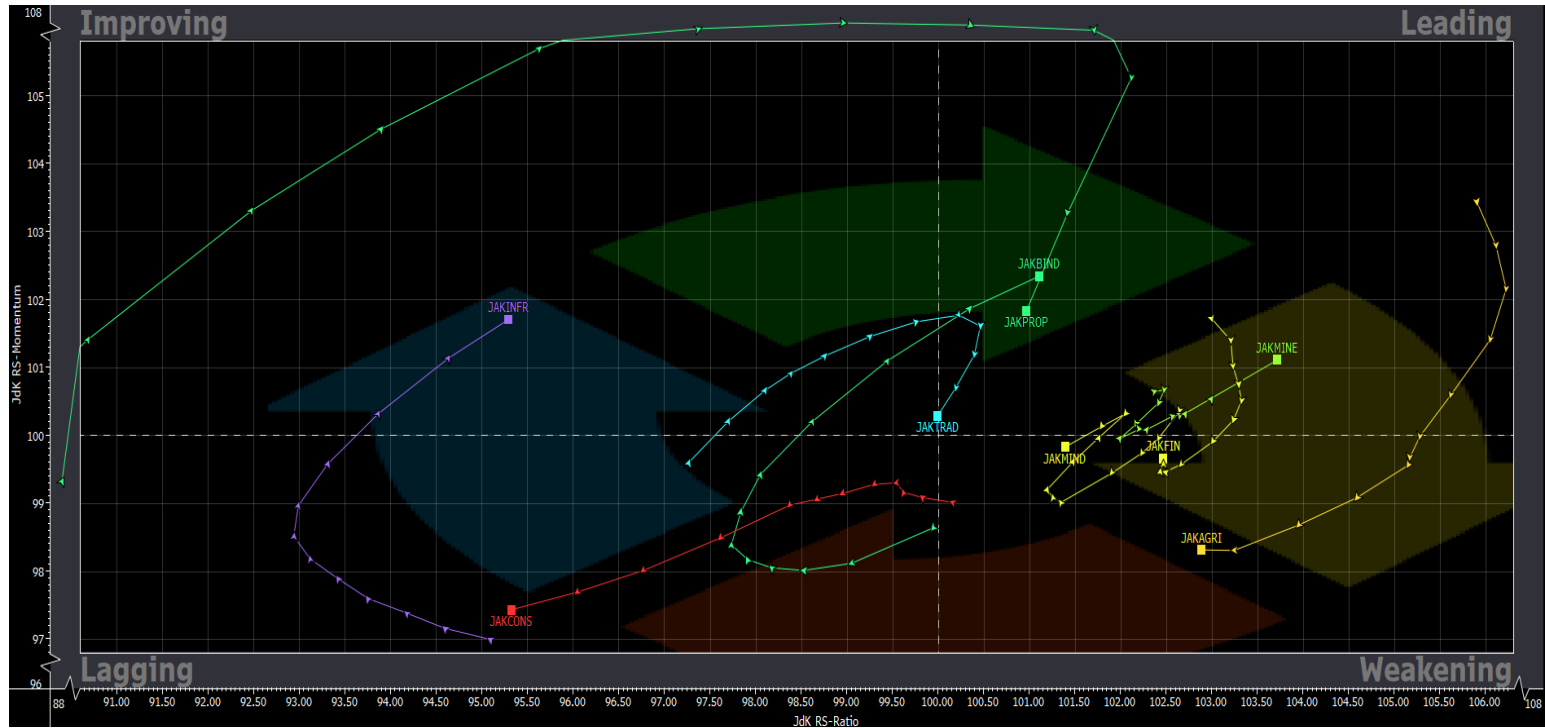
Jakarta Composite Index (JCI) short term (1-2 days) bullish

IHSG masih berpotensi menguat, terlebih bila mampu menembus resistancenya di 5,853 untuk membentuk wave [v] dari wave 3.

Top picks of the Day :

Stock	Close Price	Recommendation	Tactical Moves
EXCL	2,450	Buy on Weakness	Posisi EXCL sudah berada di akhir wave [iv] dari wave 3.
ERAA	1,770	Buy on Weakness	Saat ini pergerakan ERAA kami perkirakan sedang berada di awal wave [v] dari wave 5.
PTBA	2,480	Buy on Weakness	Saat ini pergerakan PTBA sedang membentuk wave [v] dari wave 3 dari wave (C).
MAIN	735	Sell on Strength	Pergerakan MAIN saat ini kami perkirakan sedang berada di awal wave 4 dari wave (3).

RRG – Relative Rotation Graph



MNCS Primbon Index

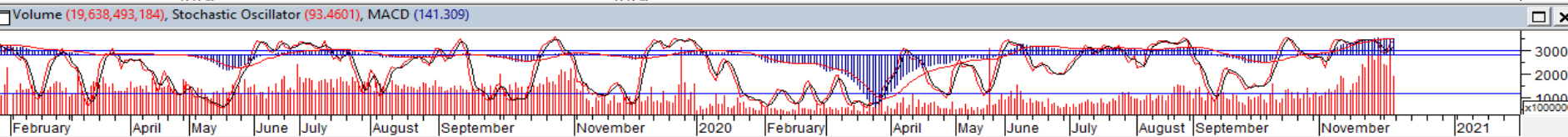


JCI – Wave 5 of 3



Menutup pekan kemarin (4/12), IHSG ditutup terkoreksi 0,2% ke level 5,810. Kami perkirakan IHSG masih berpotensi menguat terlebih bila mampu menembus resistace-nya di 5,853 untuk membentuk wave [v] dari wave 3. Namun, apabila IHSG turun di bawah 5,563, maka IHSG sudah terkonfirmasi menyelesaikan wave 3 dan akan membentuk wave 4 ke area 5,500-5,650 terlebih dahulu.

Support: 5,563, 5,420
Resistance: 5,900, 5,960



EXCL – Buy on Weakness



Jumat kemarin (4/12), EXCL ditutup menguat 1,2% ke level 2,450. Kami perkirakan posisi EXCL sudah berada di akhir wave [iv] dari wave 3. Hal tersebut berarti, koreksi EXCL sudah relatif terbatas dan berpeluang menguat untuk membentuk wave [v] dari wave 3.

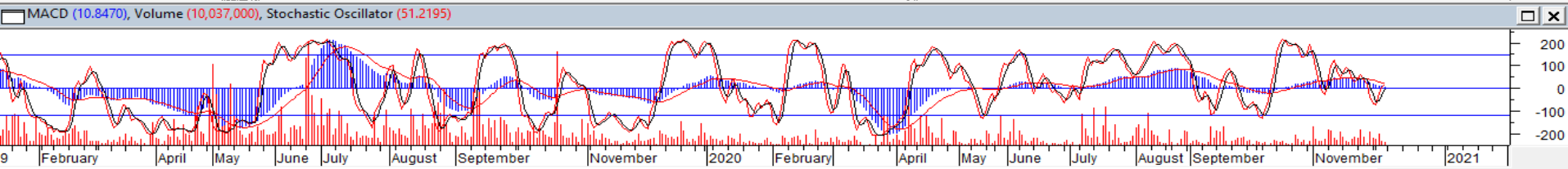
Buy on Weakness: 2,360-2,450
Target Price: 2,600, 2,800
Stoploss: below 2,280

ERAA – Buy on Weakness



Pekan kemarin (4/12), ERAA ditutup menguat 0,9% ke level 1,770. Selama tidak terkoreksi di bawah 1,665, maka saat ini pergerakan ERAA kami perkirakan sedang berada di awal wave [v] dari wave 5. Hal tersebut berarti, ERAA berpotensi untuk melanjutkan penguatannya.

Buy on Weakness: 1,720-1,770
Target Price: 1,900, 1,950
Stoploss: below 1,665

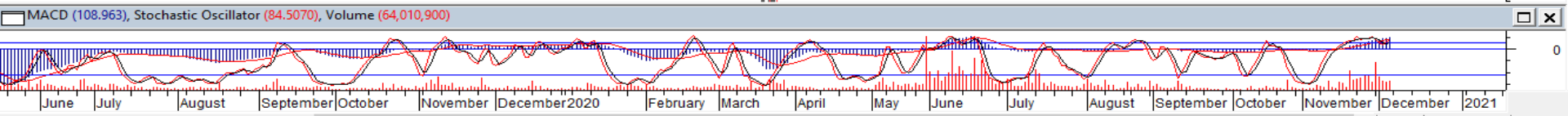


PTBA – Buy on Weakness



Pada perdagangan kemarin (4/12), PTBA ditutup menguat 1,6% ke level 2,480. Kami perkirakan, saat ini pergerakan PTBA sedang membentuk wave [v] dari wave 3 dari wave (C). Hal tersebut berarti, PTBA masih berpeluang untuk melanjutkan penguatannya.

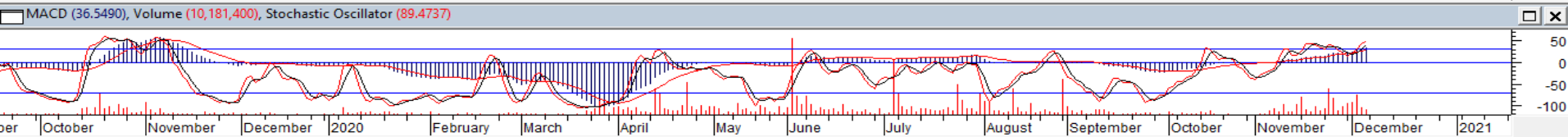
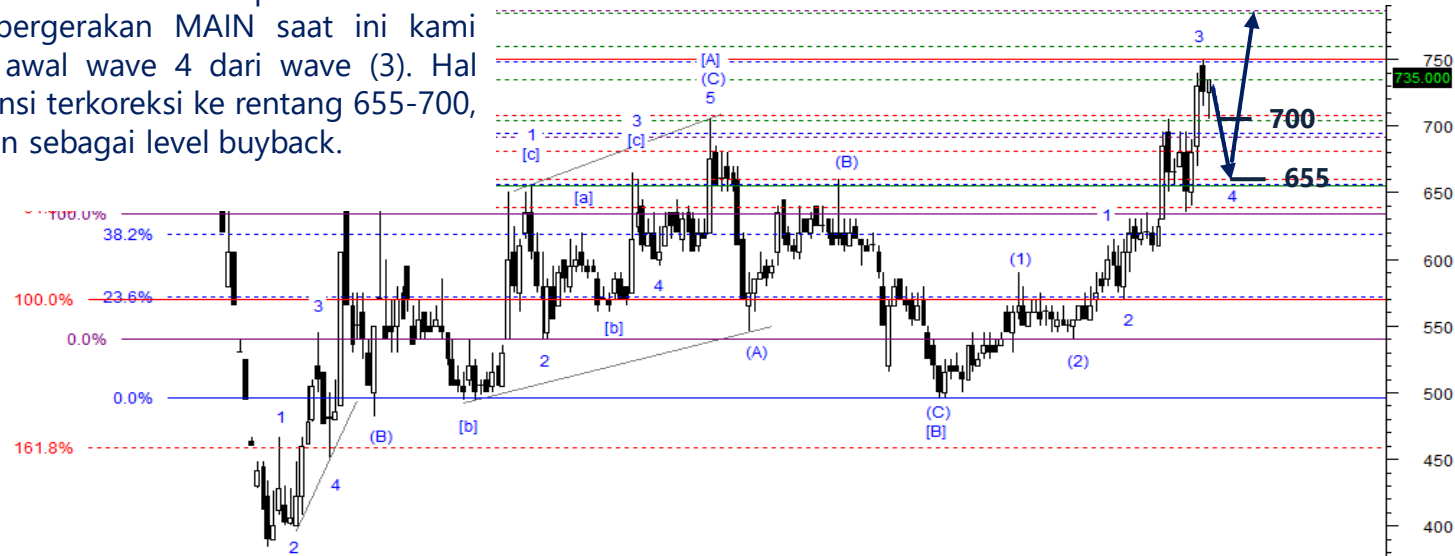
Buy on Weakness: 2,400-2,460
Target Price: 2,550, 2,600
Stoploss: below 2,310



MAIN – Sell on Strength

MAIN ditutup menguat 1,4% ke level 735 pada perdagangan Jumat kemarin (4/12). Selama belum mampu menembus resistancenya di 750, maka pergerakan MAIN saat ini kami perkirakan sedang berada di awal wave 4 dari wave (3). Hal tersebut berarti, MAIN berpotensi terkoreksi ke rentang 655-700, level koreksi ini dapat digunakan sebagai level buyback.

Sell on Strength: 735-750



Institutional Research Team



Thendra Crisnanda – Head of Institution Research
thendra.crisnanda@mncgroup.com
Investment Strategy
Ext. 52162



T. Herditya Wicaksana – Technical Analyst
herditya.wicaksana@mncgroup.com
Technical Specialist – Elliott Wave
Ext. 52150



Victoria Venny – Research Analyst
victoria.nawang@mncgroup.com
Telco, Toll Road, Logistic, Consumer, Poultry
Ext. 52236



Catherina Vincentia – Research Associate
catherina.vincentia@mncgroup.com
Ext. 52306



Muhamad Rudy Setiawan – Research Analyst
muhamad.setiawan@mncgroup.com
Construction, Property, Oil and Gas
Ext. 52317

Disclaimer : MNCS Daily Scope Wave has been issued by PT MNC Sekuritas, It may not be reproduced or further distributed or published, in whole or in part, for any purpose. PT MNC Sekuritas has based this document on information obtained from sources it believes to be reliable but which it has not independently verified; PT MNC Sekuritas makes no guarantee, representation or warranty and accepts no responsibility to liability as to its accuracy or completeness. Expression of opinion herein are those of the research department only and are subject to change without notice. This document is not and should not be construed as an offer or the solicitation of an offer to purchase or subscribe or sell any investment. PT MNC Sekuritas and its affiliates and/or their offices, directors and employees may own or have positions in any investment mentioned herein or any investment related thereto and may from time to time add to or dispose of any such investment. PT MNC Sekuritas and its affiliates may act as market maker or have assumed an underwriting position in the securities of companies discussed herein (or investment related thereto) and may sell them to or buy them from customers on a principal basis and may also perform or seek to perform investment banking or underwriting services for or relating to those companies.