



# Daily SCOPE

Wave

**MNC Financial Center Lt. 14 – 16**

Jl. Kebon Sirih No. 21 – 27, Jakarta 10340, Indonesia

[www.mncsekuritas.id](http://www.mncsekuritas.id)

a member of MNC Group

**21 Maret 2019**

Institution Research Team | [herditya.wicaksana@mncgroup.com](mailto:herditya.wicaksana@mncgroup.com) | +6221 29080 3111 Ext.52150

## Jakarta Composite Index (JCI) *short term (1-2 days) bearish*

Meskipun ditutup menguat tipis sebesar 0.04% pada perdagangan kemarin (20/3), kami tetap memperkirakan koreksi IHSG untuk membentuk wave alt [2] belum selesai. Kami memperkirakan koreksi masih akan terjadi hingga level 6,450 (minimal) atau 6,400 (ideal).

## Top picks of the Day :

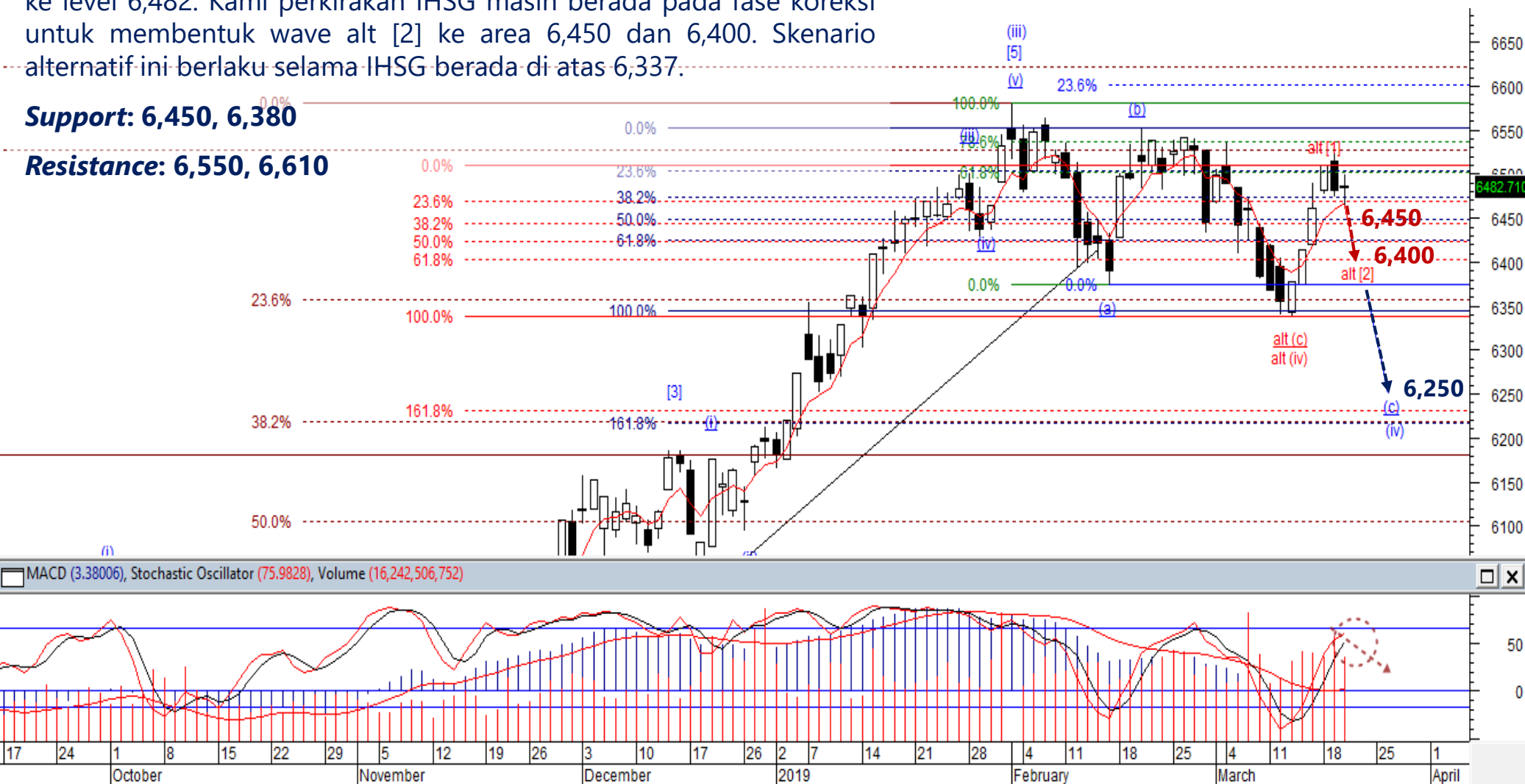
Stock	Close Price	Recommendation	Tactical Moves
AKRA	4,740	Buy on Weakness	AKRA sedang berada di wave (c) dari wave [iv], dengan level koreksi minimal berada pada level 4,600. Meskipun demikian AKRA akan <i>rebound</i> dahulu menuju level 5,000-5,100.
LSIP	1,160	Buy on Weakness	LSIP sudah berada pada akhir wave iii dari wave (c) dari wave [ii]. LSIP berpotensi menguat dalam jangka pendek untuk membentuk wave iv, dengan level penguatan 1,210-1,270.
ACES	1,805	Buy on Weakness	ACES sedang berada pada awal wave (iii) dari wave [c] dari wave [5], dengan target penguatan berada pada level 1,960.
BSDE	1,400	Sell on Strength	BSDE sedang berada pada awal wave (c) dari wave [b] dari wave C. Dimana BSDE berpotensi terkoreksi ke level 1,290 dan 1,210.

# JCI – Forming Wave 2

Pada perdagangan kemarin (20/3) IHSB ditutup menguat tipis 0.04% ke level 6,482. Kami perkirakan IHSB masih berada pada fase koreksi untuk membentuk wave alt [2] ke area 6,450 dan 6,400. Skenario alternatif ini berlaku selama IHSB berada di atas 6,337.

**Support: 6,450, 6,380**

**Resistance: 6,550, 6,610**



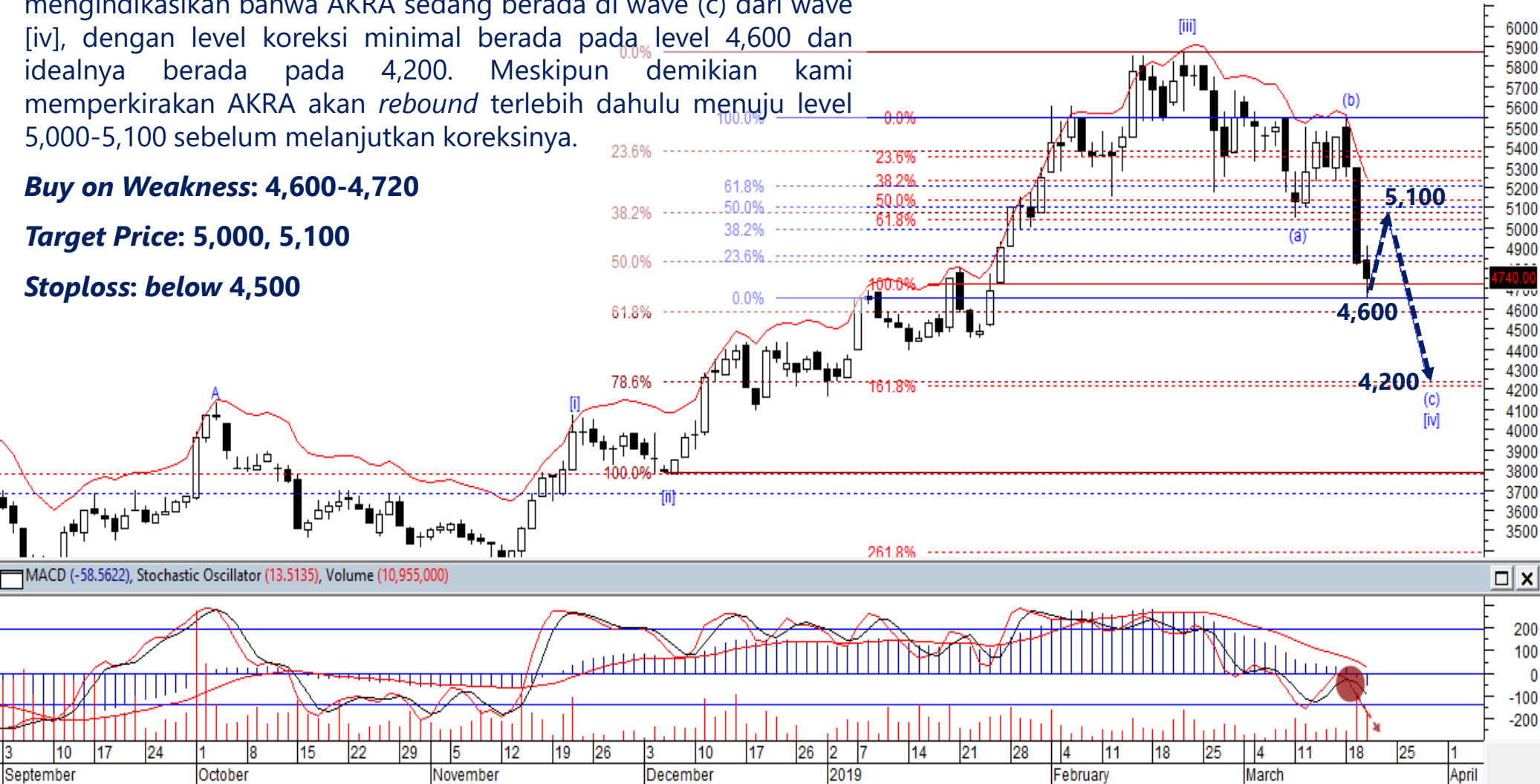
# AKRA – Buy on Weakness

Terkoreksinya AKRA selama tiga hari berturut-turut mengindikasikan bahwa AKRA sedang berada di wave (c) dari wave [iv], dengan level koreksi minimal berada pada level 4,600 dan idealnya berada pada 4,200. Meskipun demikian kami memperkirakan AKRA akan *rebound* terlebih dahulu menuju level 5,000-5,100 sebelum melanjutkan koreksinya.

**Buy on Weakness: 4,600-4,720**

**Target Price: 5,000, 5,100**

**Stoploss: below 4,500**



# LSIP – Buy on Weakness

Posisi LSIP saat ini kami perkirakan sudah berada pada akhir wave iii dari wave (c) dari wave [ii]. LSIP berpotensi menguat dalam jangka pendek untuk membentuk wave iv, dengan level penguatan 1,210-1,270.

**Buy on Weakness: 1,150-1,160**

**Target Price: 1,210, 1,250, 1,270**

**Stoploss: 1,120**



Stochastic Oscillator (4,04040), Volume (9,175,500), MACD (-45,2199)

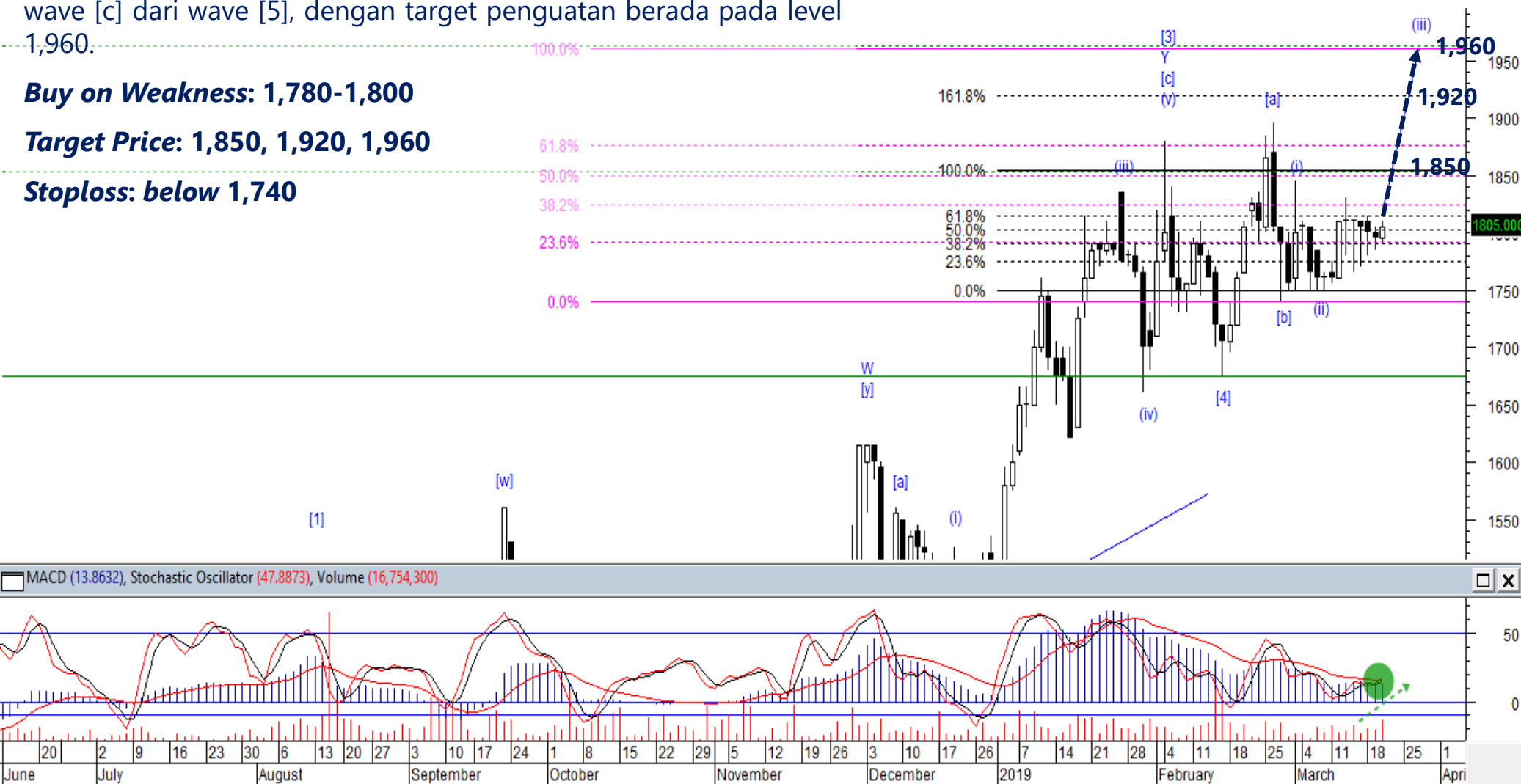
# ACES – Buy on Weakness

Kami memperkirakan ACES sedang berada pada awal wave (iii) dari wave [c] dari wave [5], dengan target penguatan berada pada level 1,960.

**Buy on Weakness: 1,780-1,800**

**Target Price: 1,850, 1,920, 1,960**

**Stoploss: below 1,740**



# BSDE – Sell On Strength

Terkoreksinya BSDE sebesar 1.1% pada perdagangan kemarin (20/3) mengindikasikan BSDE sedang berada pada awal wave (c) dari wave [b] dari wave C. Dimana BSDE berpotensi terkoreksi ke level 1,290 dan 1,210.

## Sell on Strength: 1,400-1,430







**Thendra Crisnanda – Head of Institution Research**  
[thendra.crisnanda@mncgroup.com](mailto:thendra.crisnanda@mncgroup.com)  
 Investment Strategy  
 Ext. 52162



**Victoria Venny – Research Analyst**  
[victoria.nawang@mncgroup.com](mailto:victoria.nawang@mncgroup.com)  
 Telco, Toll Road, Logistic, Consumer, Poultry  
 Ext. 52236



**Rr. Nurulita Harwaningrum – Research Analyst**  
[roro.harwaningrum@mncgroup.com](mailto:roro.harwaningrum@mncgroup.com)  
 Banking, Auto, Plantation  
 Ext. 52237



**Muhamad Rudy Setiawan – Research Associate**  
[muhamad.setiawan@mncgroup.com](mailto:muhamad.setiawan@mncgroup.com)  
 Construction, Property  
 Ext. 52317



**T. Herditya Wicaksana – Technical Analyst**  
[herditya.wicaksana@mncgroup.com](mailto:herditya.wicaksana@mncgroup.com)  
 Technical Specialist – Elliott Wave  
 Ext. 52150



**Krestanti Nugrahane Widhi – Research Associate**  
[krestanti.widhi@mncgroup.com](mailto:krestanti.widhi@mncgroup.com)  
 Plantation, Consumer  
 Ext. 52166

**Disclaimer :** MNCS Daily Scope Wave has been issued by PT MNC Sekuritas, It may not be reproduced or further distributed or published, in whole or in part, for any purpose. PT MNC Sekuritas has based this document on information obtained from sources it believes to be reliable but which it has not independently verified; PT MNC Sekuritas makes no guarantee, representation or warranty and accepts no responsibility to liability as to its accuracy or completeness. Expression of opinion herein are those of the research department only and are subject to change without notice. This document is not and should not be construed as an offer or the solicitation of an offer to purchase or subscribe or sell any investment. PT MNC Sekuritas and its affiliates and/or their offices, directors and employees may own or have positions in any investment mentioned herein or any investment related thereto and may from time to time add to or dispose of any such investment. PT MNC Sekuritas and its affiliates may act as market maker or have assumed an underwriting position in the securities of companies discusses herein (or investment related thereto) and may sell them to or buy them from customers on a principal basis and may also perform or seek to perform investment banking or underwriting services for or relating to those companies.